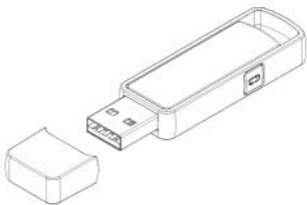



Pull

User Manual

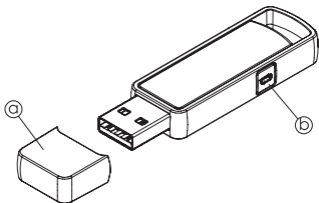
VOIP and Stereo
Bluetooth® Adapter



drone™

Components

- Ⓐ Cap
- Ⓑ Pairing button



Technical Specifications

Electrical

- Input Power • 5VDC (USB)
- Power Source • Powered via USB port

Environment

- Humidity • 5% to 90% Non-condensing
- Operating Temp • 0°C to 50°C / 32°F to 122°F
- Storage Temp • -10°C to 70°C / 14°F to 158°F

General

- Audio Quality • SCO and eSCO links supported
- Connectivity • Bluetooth 2.0
- Firmware Upgradable • Yes
- Profiles Supported • Hands-free1.5, A2DP, AVRCP
- Working Range • 100 meters (328 ft)

Physical

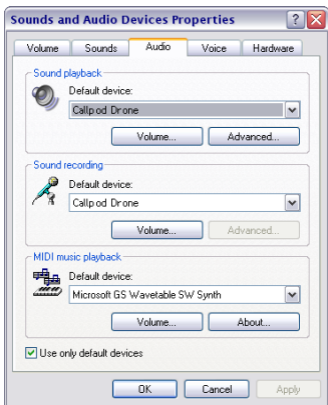
- Dimensions • 0.73"W x 2.58"L x .033"H
- Weight • 0.3 oz (9.0g)

RF Specifications

- Frequency Band • 2.4 - 2.4835 GHz
- RF Output • Class 1

Getting Started (Windows XP™)

1. Plug the Drone™ into a USB port on your computer.
2. Windows will recognize the Drone as a “USB composite device” (HID and Audio) and begin the automatic install process.
3. If prompted by Windows for a device driver, select “install the software automatically.” You may need to restart your computer.
4. Windows will automatically set the Drone as the default audio input and output.




Restoring Default Settings (Windows XP)

If you do not want the drone to be the default audio input/output device, you must manually change the settings in your audio preferences.


1. Click "Start > Control Panel > Sound and Audio Devices" to bring up your audio menu.
2. Click the Audio tab.
3. Your default input and output devices can be selected from the drop-down menus of the "Sound Playback" and "Sound Recording" sections.

Pairing the Drone to a Bluetooth[®] audio device

The Drone pairs automatically to any Bluetooth audio device that is both in range and in discovery mode. The Drone can store up to 5 Bluetooth[®] addresses in its memory for quick-pairing at later times.

1. To pair a Bluetooth audio device to the Drone, first put the Bluetooth device into discovery mode. (You may need to refer to the device's user manual).
2. Once the device is in discovery mode, press and hold the pairing button on the Drone () until the LED lights red followed by an alternate flashing of blue and red lights. The Drone will begin pairing to the device automatically and store the device's address in its memory.

Quick Pairing with Previously Paired Bluetooth[®] Devices

To pair the Drone with a previously paired device, quickly press the pairing button on the Drone () with the audio device in discovery mode.

Configuring the Drone With Specific Applications

By default, the Drone will be set as audio input/output device for the operating system. However, the Drone can be configured to work with specific applications (i.e. Skype®) if the original audio settings have been restored. To setup the Drone to work with Skype specifically:

1. Click "Tools > Options" in Skype to bring up the preferences.
2. Click on the "Audio Settings" tab on the left.
3. In the respective drop-down menus, select "Callpod Drone" as the device for "Microphone," "Speakers" and "Ringing."
4. The sound will now be routed through the Drone to the paired audio device regardless of what audio settings are chosen for the operating system.

Audio Settings: set up sound on your computer

Microphone Callpod Drone

Volume Low High

Let Skype adjust my audio settings

Speakers Callpod Drone

Volume Low High

[Make a free test call](#)

Ringing Callpod Drone

Ring PC speaker

Other things you can do

[Learn more about setting up your audio equipment](#)


[Buy a headset or Skype phones from the Skype Shop](#)

Save

Dual-Mode Advanced Functionality (Windows)

The Drone is designed to be a plug-and-play Bluetooth® audio solution and in its original form, does not support data transferring operations or pairing to Bluetooth peripheral devices. To enable the Drone for this functionality, please download the the necessary software at:

www.callpod.com/products/drone

1. Download and install the software.
2. Plug the Drone into your computer and hold the pairing button () for ten seconds.
3. The computer will recognize the Drone as a generic Bluetooth module, and you may utilize this PC software to perform functions such as data transfer and peripheral pairing (i.e. keyboard, mouse, printer, etc.) in addition to audio devices.

Callpod Limited Warranty

Subject to the exclusions contained below, Callpod, Inc. warrants Callpod®-branded products to be free from defects in materials and workmanship under normal consumer usage for the period(s) outlined below. This limited one-year warranty is a consumer's exclusive remedy and applies as follows to new Callpod products and accessories purchased by consumers. This warranty is limited to one-year from the time of purchase by the original consumer (i.e. first purchase date).

EXCLUSIONS

Normal Wear and Tear. Periodic maintenance, repair and replacement of parts due to normal wear and tear are excluded from coverage.

Abuse & Misuse. Defects or damage that result from: (a) improper operation, storage, misuse or abuse, accident or neglect, such as physical damage (cracks, scratches, etc.) to the surface of the product resulting from misuse; (b) contact with liquid, water, rain, extreme humidity or heavy perspiration, sand, dirt, extreme heat, or food; (c) use of this product(s) for commercial purposes or subjecting the product(s) to abnormal usage or conditions; or (d) other defects or damage from acts that are not the fault of Callpod®, are excluded from coverage.

Use of Non-Callpod Products and Accessories. Defects or damage that result from the use of non-Callpod-branded or certified products, accessories, software or other peripheral equipment are excluded from coverage.

Unauthorized Service or Modification. Defects or damages resulting from service, testing, adjustment, installation, maintenance, alteration, or modification in any way by someone other than a Callpod® representative or someone from an authorized service center, are excluded from coverage.

Altered Products. Products or accessories with (a) serial numbers or date tags that have been removed, altered, or obliterated; (b) broken seals or seals that show evidence of tampering; (c) mismatched serial numbers; or (d) nonconforming or non-Callpod housings or components, are excluded from coverage.

Communication Services. Defects, damage, or the failure of products, accessories or software due to any communication service or signal you may subscribe to or use with the products, accessories, or software is excluded from coverage.

Who is Covered?

This warranty extends only to the first consumer purchaser and is not transferable.

What Will Callpod® Do?

Under this warranty, Callpod, at its sole discretion, will at no charge either repair, replace or refund the purchase price of any covered product, accessory or software. We may use functionally equivalent reconditioned/refurbished/pre-owned or new products, accessories or parts.

For additional information, visit us at:
www.callpod.com

You will receive instructions on how to ship any products or accessories at your expense, to a Callpod® authorized repair center. To obtain service, you must include: (a) a copy of your receipt, bill of sale or other comparable proof of purchase; (b) a written description of the problem; (c) the name of your service provider, if applicable; (d) the name and location of the installation facility if applicable and (e) your mailing address and telephone number.

ANY IMPLIED WARRANTIES, INCLUDING WITHOUT LIMITATION THE IMPLIED WARRANTIES OF MERCHANTABILITY AND FITNESS FOR A PARTICULAR PURPOSE, SHALL BE LIMITED TO THE DURATION OF THIS LIMITED WARRANTY, OTHERWISE THE REPAIR REPLACEMENT, OR REFUND AS PROVIDED UNDER THIS EXPRESS LIMITED WARRANTY IS THE EXCLUSIVE REMEDY OF THE CONSUMER, AND IS PROVIDED IN LIEU OF ALL OTHER WARRANTIES, EXPRESS OR IMPLIED. IN NO EVENT SHALL CALLPOD BE LIABLE, WHETHER IN CONTRACT OR TORT (INCLUDING NEGLIGENCE) FOR DAMAGES IN EXCESS OF THE PURCHASE PRICE OF THE PRODUCT, ACCESSORY OR SOFTWARE, OR FOR ANY INDIRECT, INCIDENTAL, SPECIAL OR CONSEQUENTIAL DAMAGES OF ANY KIND, OR LOSS OF REVENUE OR PROFITS, LOSS OF BUSINESS, LOSS OF INFORMATION OR DATA, SOFTWARE OR APPLICATIONS OR OTHER FINANCIAL LOSS ARISING OUT OF OR IN CONNECTION WITH THE ABILITY OR INABILITY TO USE THE PRODUCTS, ACCESSORIES OR SOFTWARE TO THE FULL EXTENT THESE DAMAGES MAY BE DISCLAIMED BY LAW.

Product Registration

Register products online at:
www.callpod.com/product/registration
or by phone: 1-800-951-CPOD

Product registration is an important step towards enjoying your new Callpod[®] product. Registering helps us facilitate warranty service and permits us to contact you should your product require an update or other service. Registration is not required for warranty coverage. Your serial number can be found on the inside of the back cover of this manual.

Please retain your original dated sales receipt for your records. For warranty service of your product you will need to provide, at a minimum, a copy of your dated sales receipt with the specified product to confirm warranty status.

Copyright Notice

All Callpod® products and information shared in this manual are protected by copyright. Copying, reproducing, reverse engineering or distributing any information of Callpod-related products hardware or software without a formal and written authorization and license from Callpod, Inc. is prohibited and may result in legal action.

Export Law Assurances

This product is controlled under the export regulations of the United States of America. The Government of the United States of America may restrict the exportation or re-exportation of this product to certain destinations. For further information contact the U.S. Department of Commerce and International Trade Commission.

Certification

The Drone is certified by CE, FCC, and Bluetooth® for safety and reliability.

Japan Radio Law (JRL) compliant.

Unauthorized changes or modifications to this device may impair your ability to operate this device and will void the warranty.

This device complies with Part 15 of the FCC Rules. Operation is subject to the following two conditions: (1) this device may not cause harmful interference, and (2) this device must accept any interference received, including interference that may cause undesired operation.

This Class B digital apparatus complies with Canadian ICES-003. Cet appareil numérique de la classe B est conforme à la norme NMB-003 du Canada.