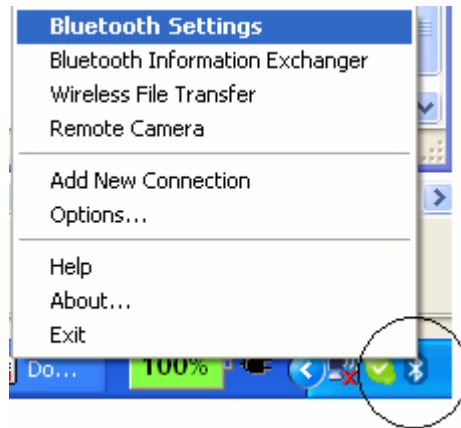


# Callpod Dragon + PC/Skype + Cell phone switching

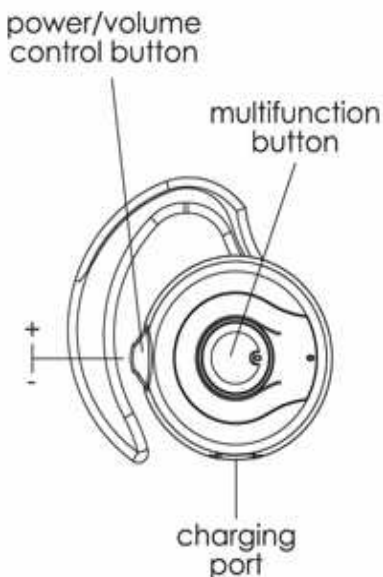
Created on November 9, 2007

support@callpod.com

The Dragon headset has the unique ability to connect with a PC and cell phone at the same time so you can make or accept phone calls on either system with ease. Switching between the PC and cell phone is simple and automatic. This tutorial describes briefly how to set this up and hopefully answers any questions you might have. We assume here that you're using a Windows PC enabled with Bluetooth or using an external Bluetooth USB plug. Most Bluetooth drivers on the PC utilize the Bluetooth stack for windows created by Toshiba. The Bluetooth settings dialog should be accessible by double-clicking on the Bluetooth icon in the lower right hand corner of your screen:

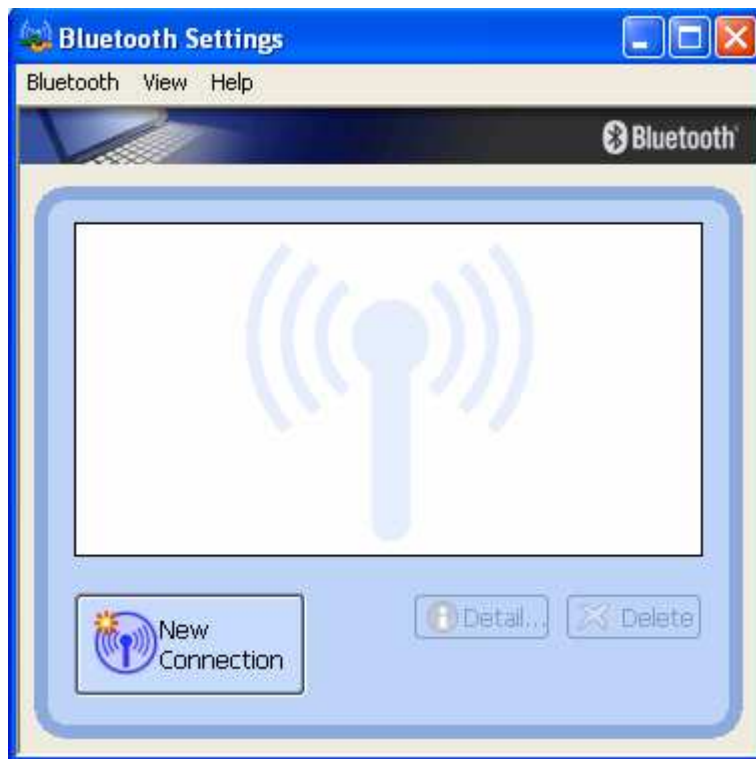


Note: To initialize your headset back to factory settings, just turn on the headset by pressing the power button, then press and hold the multifunction button for 4 seconds until the red and blue lights turn on for a few moments.

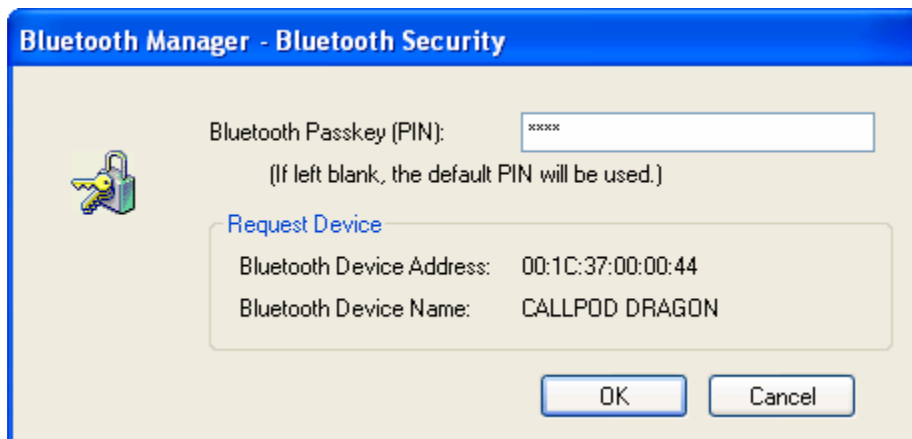
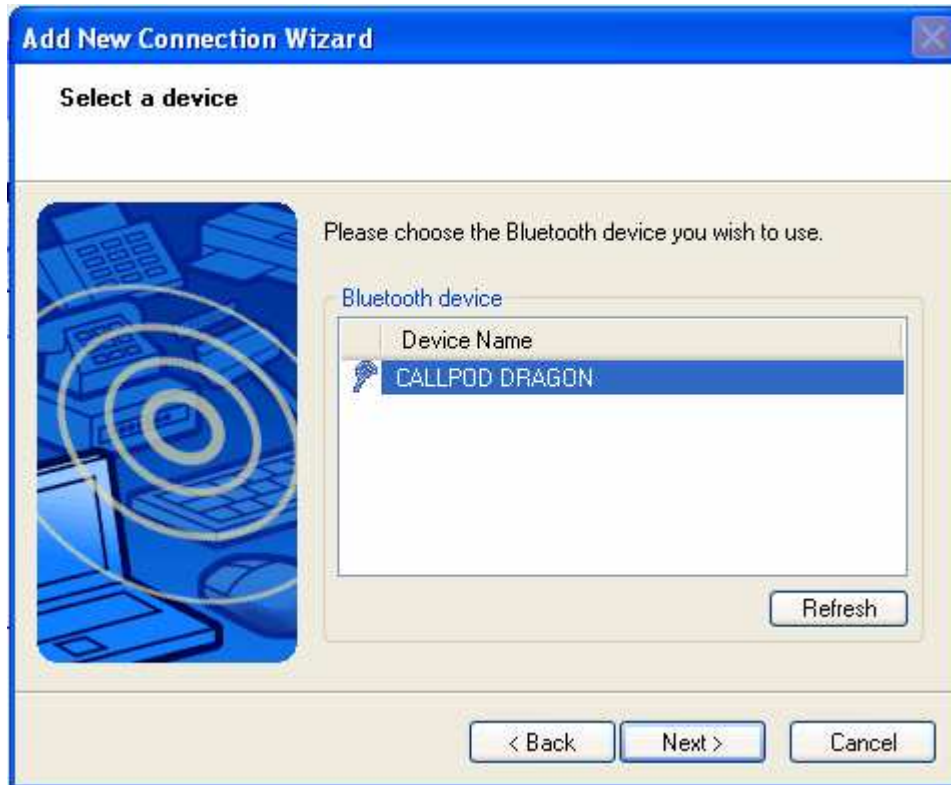


## Directions for Skype + Cell phone switching:

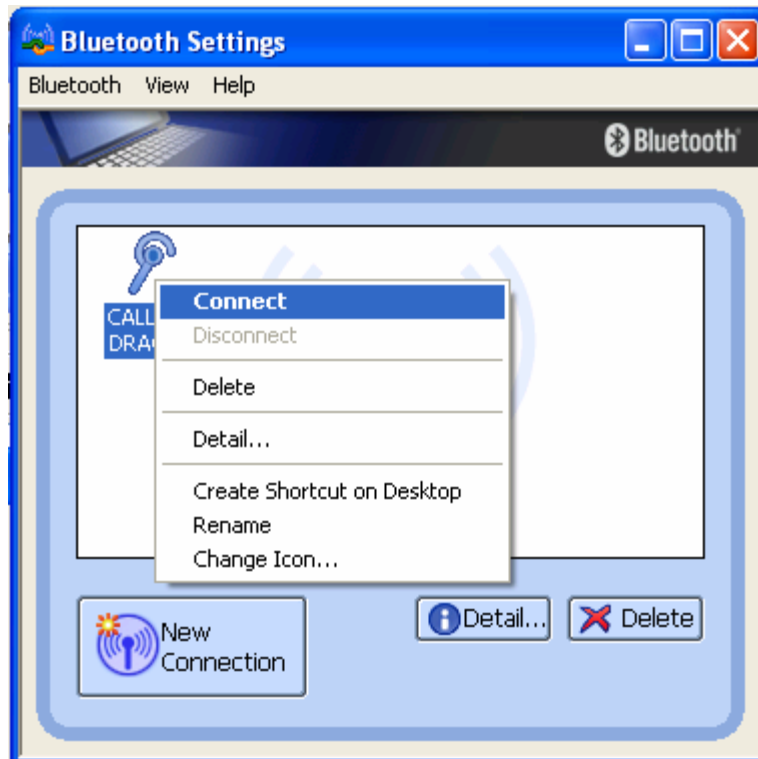
1. Pair and connect the Dragon to your cell phone using your phone's Bluetooth menu. The Dragon headset starts off in a discoverable state when you turn it on, unless it's connected to something already. To disconnect the Dragon and start fresh, simply press and hold the multifunction button for a 4 seconds. The red and blue lights will turn on for a few moments and then start flashing back and forth. Use the PIN code "0000" when pairing with the Dragon.
2. After your cell phone has connected to the Dragon, place your Dragon in a discoverable mode **again** by simply tapping on the power button. The red/blue lights will begin to flash for about 90 seconds.
3. From your PC's Bluetooth menu, click on "New Connection":



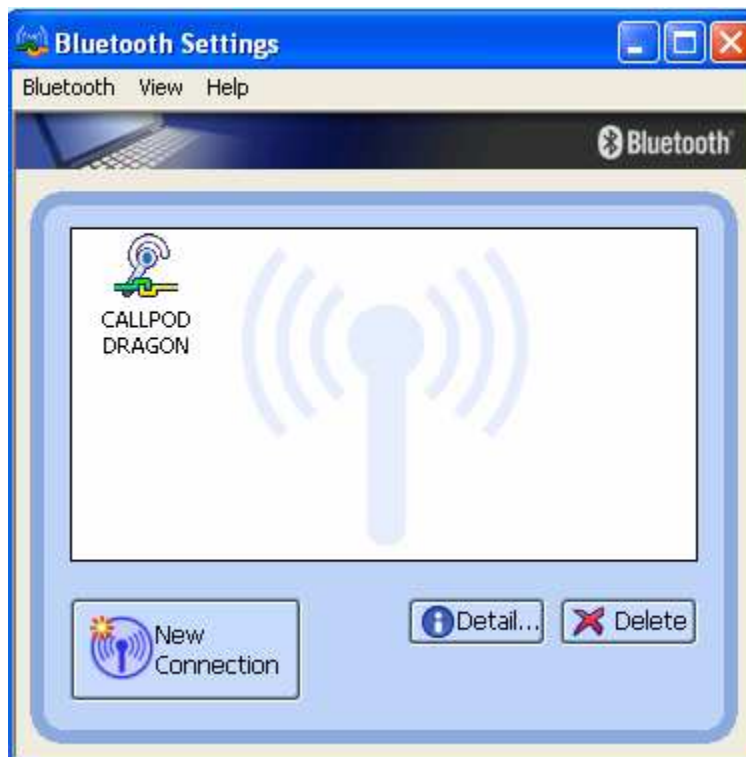
4. Click Next and enter the PIN code 0000



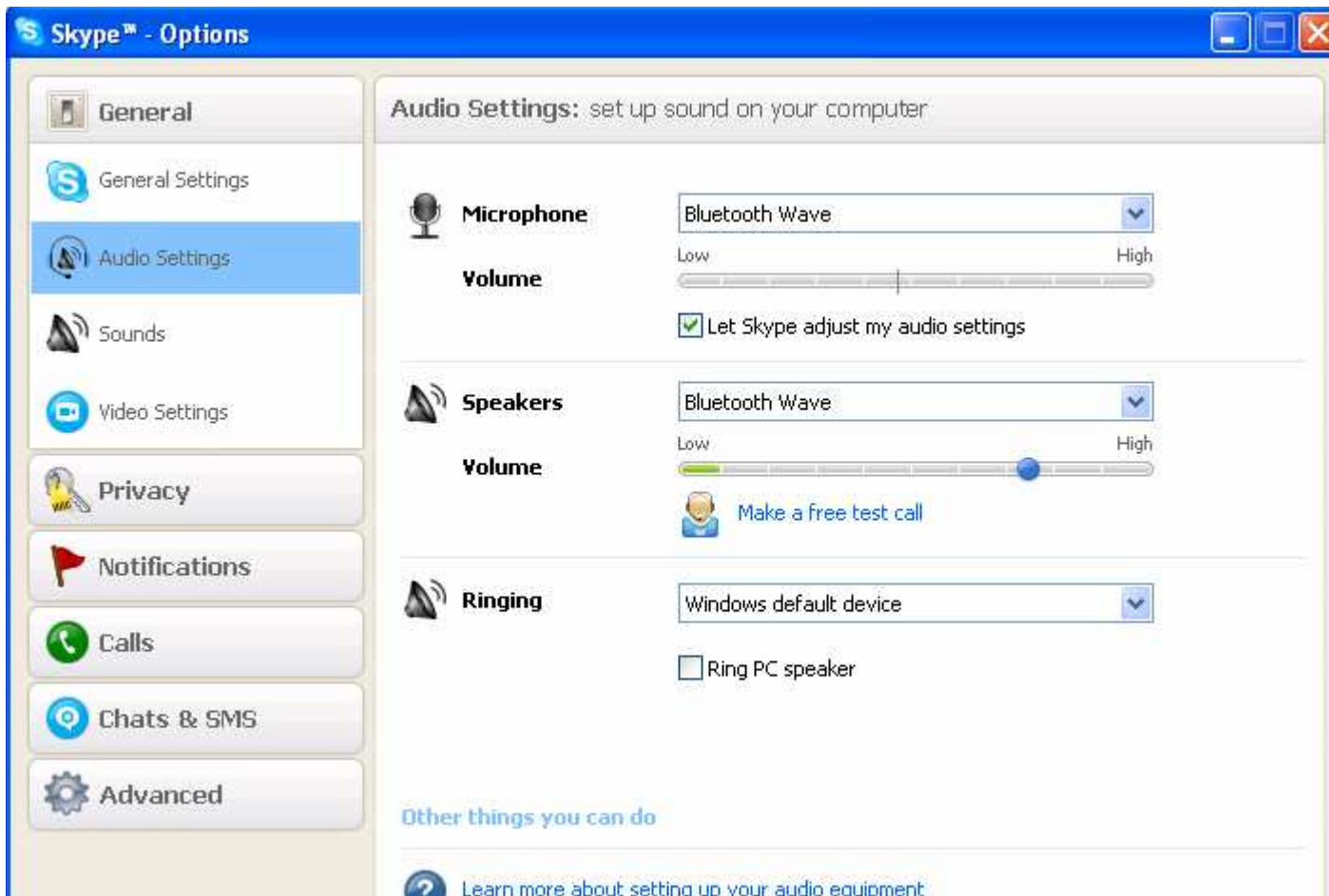
5. After pairing is complete, you will need to right-click CALLPOD DRAGON and click "Connect":



6. When the audio connection is established, the Bluetooth Settings manage will look like this:



7. From Skype, you may need to click on Tools->Options and select "Bluetooth Wave" for the Microphone and Speaker devices:



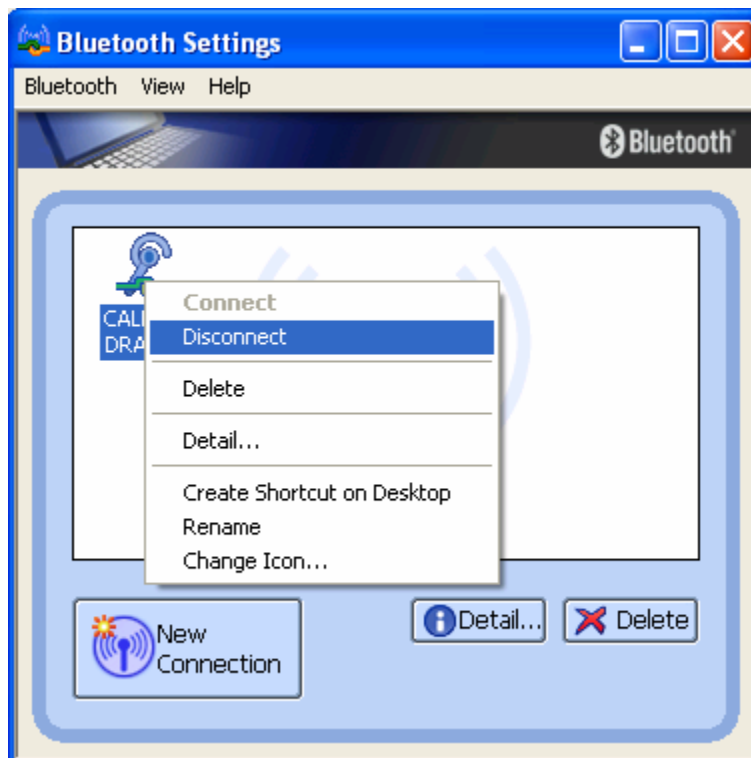
8. You're done! At this point you can make or accept calls on Skype or your cell phone. Just a couple of notes here to help....

NOTE: If you get a phone call on your cell phone, you may answer by pressing the multifunction button on your headset. The audio connection will automatically switch FROM your computer to your cell phone.

After the connection transfers to your cell phone, your PC may pop up the below dialog and you should just ignore it... **DO NOT CLICK OK. JUST LEAVE IT ALONE.** After your cell phone call is over, the Dragon will switch back to your PC in about 5 seconds and this dialog will go away by itself:



NOTE: If you're not going to be using PC/Skype for a while, go ahead and shut down the PC connection from the Bluetooth settings menu. This will help save the battery on your Dragon:



If you need to make a Skype call, just right-click and connect to the Dragon any time. If a cell phone call is active, it will switch over to the PC.

If you have any questions, please contact the Callpod support team at [support@callpod.com](mailto:support@callpod.com) or <http://www.callpod.com/contact>

**callpod**<sup>®</sup>  
www.callpod.com

Copyright 2007 Callpod Inc. All Rights Reserved